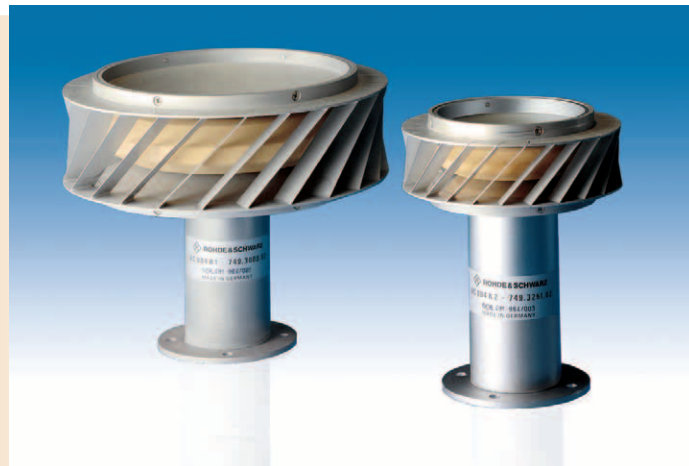


SHF Antennas

Omnidirectional Antennas

R&S® AC 004R1/R&S® AC 004R2



18 GHz to 26 GHz

26 GHz to 40 GHz

**Omnidirectional broadband reception of
right-hand circularly polarized signals**

Features

- ◆ Omnidirectional reception
- ◆ Wide frequency range
- ◆ Circular polarization
- ◆ Reception of horizontally and vertically polarized signals

Brief description

The Omnidirectional Antennas R&S® AC004R1 and R&S® AC004R2 have been optimized for omnidirectional reception in the frequency ranges 18 GHz to 26 GHz and 26 GHz to 40 GHz.

The circularly polarized antennas can also be used for reception of horizontally and vertically polarized signals.

Due to their mechanical design, the antennas are suitable for use under extreme environmental conditions (e.g. in vehicles).



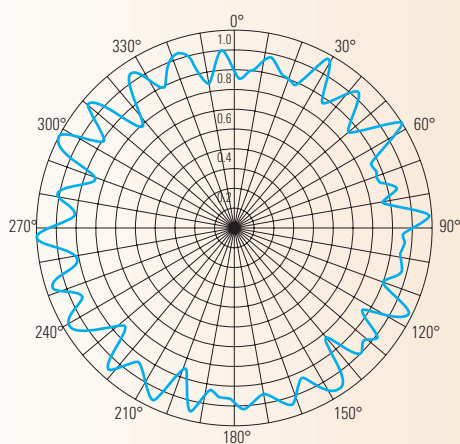
Specifications

Frequency range		MTBF	>500 000 h
R&S® AC004R1	18 GHz to 26 GHz	Operating temperature range	-35 °C to +65 °C
R&S® AC004R2	26 GHz to 40 GHz	Max. wind speed	180 km/h (without ice deposit)
Polarization	right-hand circular	Dimensions (diameter × H) with radome	
Input impedance	50 Ω	R&S® AC004R1	approx. 150 mm × 123 mm
VSWR	<2.5	R&S® AC004R2	approx. 95 mm × 127 mm
Gain	typ. 2 dBi	Weight	
Uncircularity of azimuth pattern	typ. ±2 dB	R&S® AC004R1	approx. 1.4 kg
Connector	RPC2.92 (K) female	R&S® AC004R2	approx. 1.8 kg

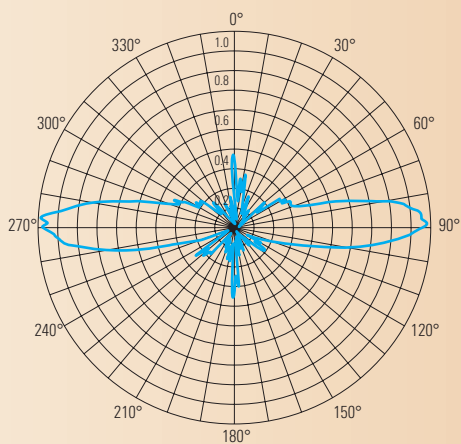
Ordering information

Omnidirectional Antenna

18 GHz to 26 GHz	R&S® AC004R1	0749.3000.03
26 GHz to 40 GHz	R&S® AC004R2	0749.3251.03



Typical horizontal radiation pattern



Typical vertical radiation pattern